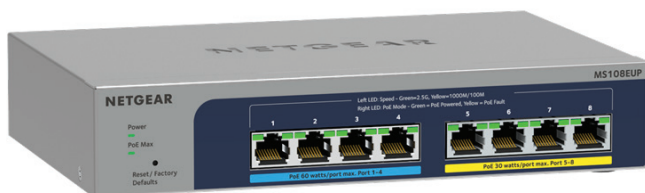


NETGEAR 8-port Ultra60 PoE++ Multi-Gigabit (2.5G) Ethernet Plus Switch



High-speed and Powerful Network with a Compact Switch

NETGEAR Plus Switches with PoE meet business networks growing needs by providing fundamental network features such as simplified VLANs, QoS set-up and IGMP Snooping that will help optimize the performance of business networks. Plus Switches are the perfect upgrade from the plug-and-play unmanaged switch, delivering essential networking features at a very affordable

price. The new model MS108EUP supports 2.5 Gigabit speed connectivity and Power-Over-Ethernet (PoE) that can provide up to 60W/port. The new switch model can power devices such as VoIP phones, surveillance IP cameras, wireless access points and many other applications. This new Plus switch includes advance PoE control to help optimize the performance and

troubleshooting of business networks. The new and improved business-friendly GUI allows easy management and simple configuration. With the growing deployment of applications and an all-in-one solution, providing management and power to these applications would be ideal.

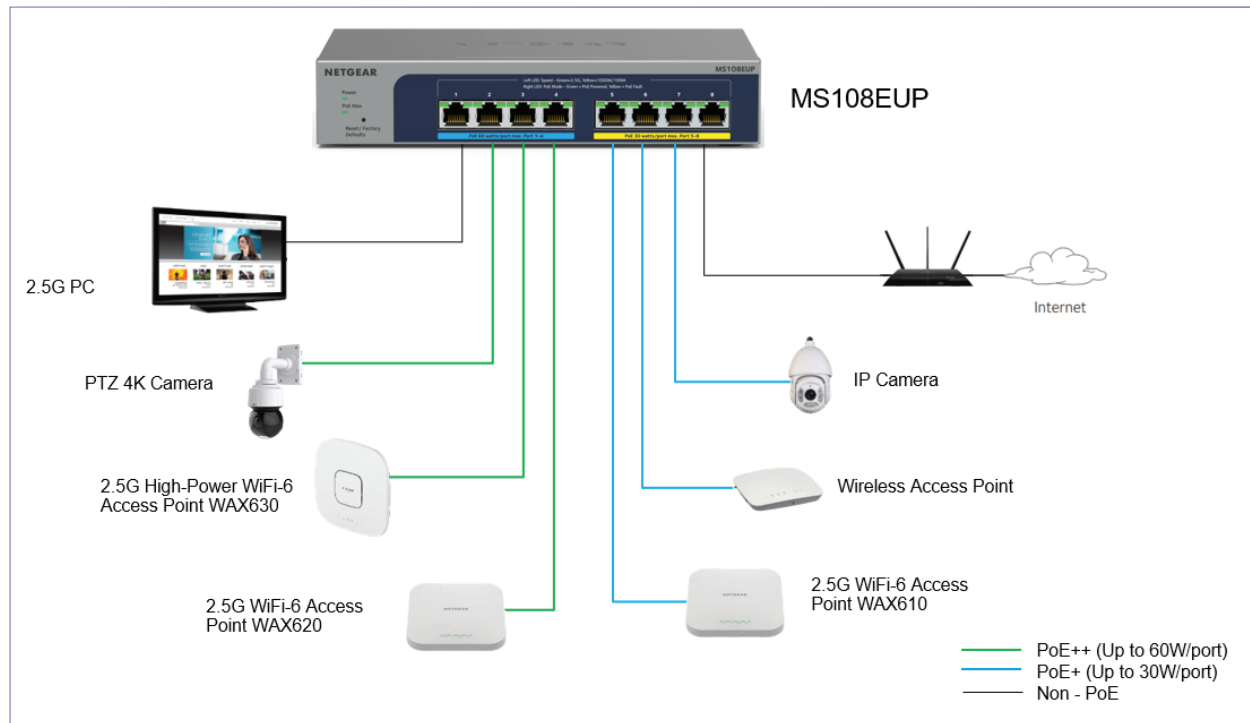
Highlights

- 802.3bt standard offering up to 60W/port on Port 1-4, 802.3at (30W/port) on Port 5-8
- Enable network configuration and management at the price point of Unmanaged Switches
- Simple, yet useful network set-up on top of plug-and-play connectivity
- Business-friendly and easy-to-use web browser-based management GUI
- VLAN support for traffic segmentation
- Quality of Service (QoS) for traffic prioritization
- Auto "denial-of-service" (DoS) prevention
- Troubleshoot connection issues via cable test
- Energy Efficient Ethernet (IEEE 802.3az) support for maximum power savings
- Loop prevention and broadcast storm controls
- Rate limiting for better bandwidth allocation
- Port mirroring for network monitoring
- Jumbo frame support
- Advanced features such as per port PoE controls
- Fanless, silent operation with desktop and wall-mount options
- Lifetime 24/7 Chat Technical Support*
- Next-Business-Day Hardware Replacement**
- Limited Lifetime Hardware Warranty

NETGEAR 8-port Ultra60 PoE++ Multi-Gigabit (2.5G) Ethernet Plus Switch

Application Sample

Power The Devices in Your SMB Business



NETGEAR 8-port Ultra60 PoE++ Multi-Gigabit (2.5G) Ethernet Plus Switch

Technical Specifications

Features	MS108EUP
1G/2.5G Ethernet RJ-45 copper ports (100M/1G/2.5G) - 1000BASE-T	8
Enclosure	Metal
Connector type	Metal
PoE	
# of PoE ports	8
# of PoE/ PoE+ / PoE++ ports	4 PoE+ and 4 PoE++
Total PoE/PoE+ budget	230W
Advanced PoE controls	Yes
PoE scheduling	Yes
Performance Specifications	
Forwarding modes	Store-and-forward
Bandwidth	40Gbps
Max MAC entries	16K
Buffer size	1.5MB
Energy Efficient Ethernet (IEEE 802.3az) compliant	Yes
Priority queuing	WRR
Jumbo frame support	12,000 bytes
Acoustic noise level @ 25° C (dBA) (ANSI-S10.12)	0
Mean Time Between Failures (MTBF) @ 25° C	373,644 hrs (42.6 yrs)
L2 Services - VLANs	
VLAN (# supported)	64
IEEE 802.1Q VLAN tagging	Yes
Port-based VLANs	Yes
L2 Services - Availability	
Link aggregation/ port trunking	Yes
Number of static manual LAGs and # of members	4 LAG with max 4 members in each LAG
L2 Services - Multicast Filtering	
IGMP snooping (v1, v2 and v3)	Yes
Block unknown multicast	Yes
Supported multicast groups	128
L3 Services - DHCP	
DHCP client	Yes
Quality of Service	
Rate limiting	Yes
DSCP	Yes

NETGEAR 8-port Ultra60 PoE++ Multi-Gigabit (2.5G) Ethernet Plus Switch

Quality of Service		MS108EUP
IEEE 802.1p COS		Yes
Port-based QoS		Yes
TOS		Yes
WRR (Weighted Round Robin)		Yes
Strict Priority queue technology		No
IEEE Network Protocols		
<ul style="list-style-type: none"> • IEEE 802.3 Ethernet • IEEE 802.3bz 2.5GBASE-T • IEEE 802.3ab 1000BASE-T • IEEE 802.3u 100BASE-T • IEEE 802.1p Class of Service • IEEE 802.3az Energy Efficient Ethernet (deactivated by default) 		<ul style="list-style-type: none"> • IEEE 802.3ad Dynamic Link Aggregation (LACP) • IEEE 802.1Q VLAN Tagging • IEEE 802.3x Full-duplex Flow Control • IEEE 802.3af PoE • IEEE 802.3at PoE+ • IEEE 802.3bt PoE++
Management		
System password		Yes
Web browser based management GUI		Yes
PC utility		No
Port mirroring		Yes
Max number of source ports allowed (one-to-one port mirroring)		1
Many-to-one port mirroring		No, 1-to-1 only
Cable test utility		Yes
FW Upgrade thru plus utility (TFTP)		No
Config download (to switch) thru plus utility		No
Config upload (to server)		Yes
LEDs		
Per port		Speed, Link, Activity, PoE
Per device		Power, PoE Max
Physical Specifications		
Dimensions (W x D x H)		210 x 140 x 40 mm (8.27 x 5.51 x 1.58 in)
Weight		0.9 kg (1.984 lb)
Environmental Specifications		
Operating		
Operating Temperature		32° to 104°F (0° to 40°C)
Humidity (relative)		90% maximum relative humidity (RH), non-condensing
Altitude		10,000 ft (3,000 m) maximum
Storage		
Storage Temperature		- 4° to 158°F (-20° to 70°C)
Humidity (relative)		95% maximum relative humidity (RH), non-condensing
Altitude		10,000 ft (3,000 m) maximum

NETGEAR 8-port Ultra60 PoE++ Multi-Gigabit (2.5G) Ethernet Plus Switch

Electromagnetic Emissions and Immunity		MS108EUP
Certifications		CE mark
		FCC Part 15 class B
		CE/EN55032/24
		CSA
		VCCI
		ACMA
		KC
		CCC
		BSMI
Warranty and Support		
Hardware warranty (All except China/India)		Limited lifetime* warranty
China		5-year warranty
External power adapter warranty		2-year warranty
Technical support (online, phone)		90 days free technical support with registration
ProSUPPORT OnCall 24x7 service plans		Category 2
		PMB0312-10000S
		PMB0332-10000S
		PMB0352-10000S
Package Contents		
All Models		NETGEAR Plus Switch
		Power adapter (power cable varies by region)
		Wall installation kit
		Rubber feet
		Installation guide

*This product comes with a limited warranty that is valid only if purchased from a NETGEAR authorized reseller, and covers unmodified hardware, fans and internal power supplies – not software or external power supplies, and requires product registration at <https://www.netgear.com/business/registration> within 90 days of purchase; see <https://www.netgear.com/about/warranty> for details. Intended for indoor use only.

**The NETGEAR OnCall 24x7 contract provides unlimited phone, chat and email technical support for your networking product.

NETGEAR, the NETGEAR Logo, and NETGEAR Insight are trademarks of NETGEAR, Inc. in the United States and/or other countries. Other brand names mentioned herein are for identification purposes only and may be trademarks of their respective holder(s). Information is subject to change without notice. ©NETGEAR, Inc. All Rights reserved.

NETGEAR, Inc. 350 E. Plumeria Drive, San Jose, CA 95134-1911 USA, 1-888-NETGEAR (638-4327), E-mail: info@NETGEAR.com, www.NETGEAR.com

DS-MS108EUP-3Jan23